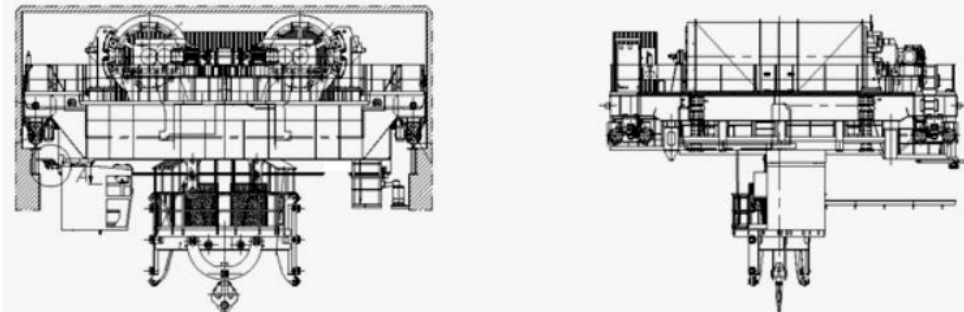


Shaft bridge crane with lowering depth up to 550 meters

Questionnaire



Technical specifications

1. Operating conditions		
1.1	Climatic region	
1.2	Placement category: (outdoor – «1», under the roof – «2», not heating zone – «3», heating zone – «4», high humidity zone – «5»)	
1.3	Operating temperature range, °C	
1.4	Seismic resistance, (Richter scale)	
1.5	Humidity, %	

2. Crane working mode characteristics

2.1	Crane purpose (working type description, load types, types of load-handling devices etc.)	
2.2	Estimated qualification group of the crane and its mechanisms according to ISO 4301-1	
2.3	Lifting capacity, t	
	With traverse, t	
2.4	Lifting speed,	
	Loaded, m/sec (m/min)	
	Unloaded, m/sec (m/min)	
2.5	Speed regulation range from nominal, %	
2.6	Lifting height, m	

3. Additional information

3.1	Traverse guide type	
3.2	Crane traverse dimensions should provide its free movement in a trunk diameter, m	

4. Crane travelling mechanism		
4.1	Estimated qualification group of mechanism according to ISO 4301-1	
4.2	Travelling speed, m/sec (m/min)	
4.3	Crane track, m	
4.4	Regulation range from nominal, %	
4.5	Crane rail type	
5. Additional requirements and other parameters		
5.1	Current supply type of crane	
5.2	An electric hoist should be installed on a crane with lifting capacity not less than, t	
5.3	Current type and electric network parameters	
5.4	Electric network parameters errors	
5.5	Control cabin	
5.6	Electrical cabin	
5.7	Control system additional requirements	
5.8	Quantity of cranes	
6. Additional requirements (parts, painting etc.)		
7. Customer information		
7.1	Company name	

7.2	Address	
7.3	Contact person	
7.4	Phone	
7.5	E-mail	

Thank you for the provided information!

Please, send us this form to our e-mail address: info@tehnoros.com